



Catholic Leadership
INSTITUTE

Welcome Parish Leaders!

Called for More

DMI Webinar #1 — ACCESSING THE DATA —



IGNITING
OUR PARISHES



EMBOLDENING
OUR CLERGY



FORGING
OUR FUTURE



Prayer for Leaders

We pray that you will create among us Catholic leaders, individuals made in your image who will apply your teachings in their lives and positively impact our families, our workplaces, our communities, and our Church.

Help us to inspire those with whom we come in contact to share their God-given talents, to do your will, and to find a place in your kingdom where their deepest joys and the world's deepest hungers meet and cry for their special qualities and abilities.

Make us leaders, Lord, leaders with strength and courage to follow you. Leaders who make your love visible to the world in all of our words and actions. Amen.

Objectives for this Session

1. Learn how to access your parish's DMI results on the DMI Portal
2. Learn how to interpret and dig deeper into your parishioner feedback to identify strengths and opportunities.

This DMI Webinar Series



#1
Access
Results

#2
Understand
Results

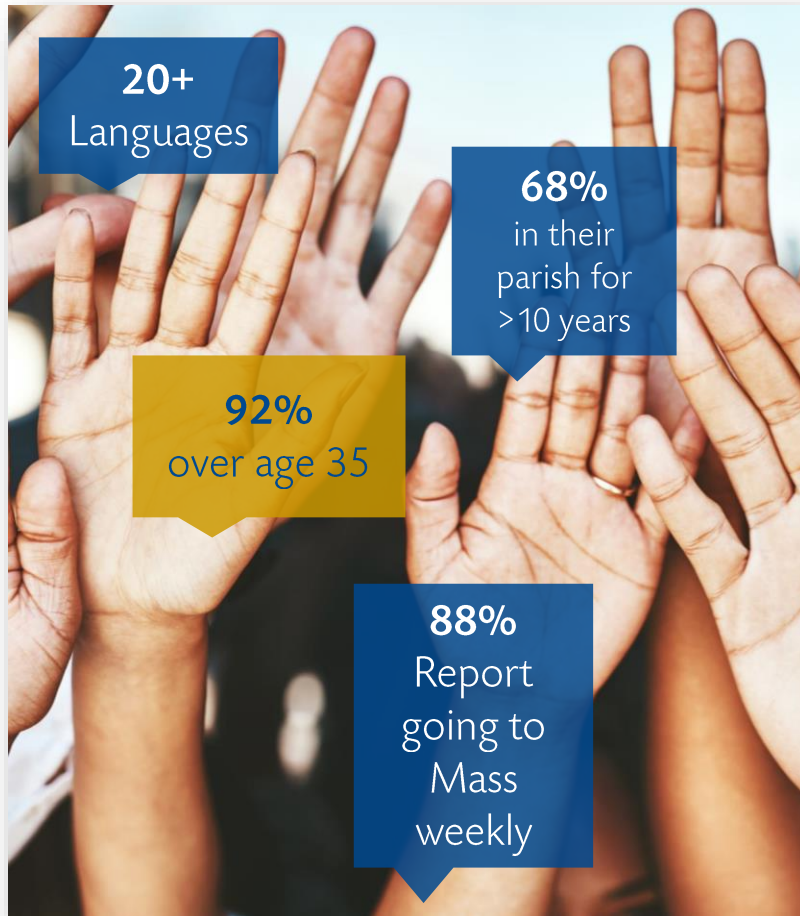
#3
Discern
Actions

Disciple Maker Index

A map of the United States with various colored callout boxes (yellow, orange, green, blue) placed across different regions, representing responses from parishioners. The map is set within a rounded rectangular frame with a drop shadow.

Over 1 Million Parishioners Responses

Disciple Maker Index



- **95** question survey instrument
- Developed in **2014** by CLI
- **Individual Spiritual Growth**
- **Engagement with the Parish**

What did we ask?



Attitude
and Belief



Relationship
and
Satisfaction



Participation



Demographics



Ranges of Responses

Most questions are on a range or scale:

- *Strongly Agree* to *Strongly Disagree*



- *Daily* to *Never*



Putting Results in Context

– 3 WAYS –

BENCHMARK GROUPS

- ▶ Nationally, Diocesan-Wide, Like Size, Like Setting
- ▶ Top 3 Performers

LONGITUDINAL

- ▶ Recommend retaking every 2-3 years
- ▶ Measure: improvement and change

CROSS TABS AND FILTERS

- ▶ Compare any 2 questions on the survey to understand the relationship or correlation
- ▶ Filter by Demographics

Interpreting Results: Strengths

Father is the best homilist in the diocese!

Father does a nice job

47%

38%

9%

3

3

My parish helps me grow spiritually by preaching and homilies that connect my faith to everyday life."

- 47% "strongly agree" that preaching connects to everyday life.
- 85% "strongly agree" OR "agree" that preaching connects to everyday life.

Interpreting Results: Opportunities



My parish helps me grow spiritually by: preaching and homilies that connect my faith to everyday life.”

- 9% “neutral” that preaching connects to everyday life
- 3% disagree that preaching connects to everyday life
- 3% “strongly disagree” that preaching connects to everyday life

Interpreting Results

TARGETS FOR CHANGE



My parish helps me grow spiritually by preaching and homilies that connect my faith to everyday life.”

- “Neutral,” “Disagree,” or “Strongly Disagree”- this will require a lot of work
- “Agree”- low hanging fruit

Interpreting Results

USING THE PORTAL



- Key questions from the DMI to review
- Recommended paths for viewing your results
- 11 pre-determine reports to guide you
- Access to all questions on the survey

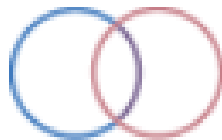
Reports: Custom & Context



Demographics



Benchmarks



Cross Tabulation



Key Leader Perspective

Reports

BELIEFS, EFFECTIVENESS – AND – DRIVERS FOR BIG OUTCOMES



Belief in Core Catholic Teaching



Key Drivers



Effectiveness of Parish Support

Reports

4 FACTORS OF A THRIVING PARISH



Leadership Indicators



Sunday Experience



Spiritual Practices



Missionary Impulse

Interpreting Results

DMI Reporting Center for INSERT YOUR PARISH (2020)

2020



These reports have been generated to help you interpret your DMI results and better plan for the future of your parish.

Analytics

706

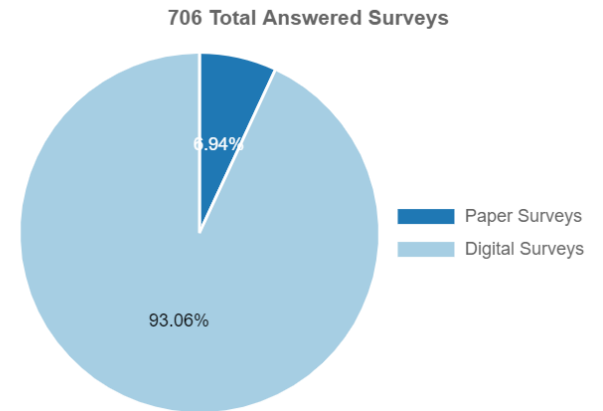
0% of 0 parishioners completed the survey

657

Total online survey responses

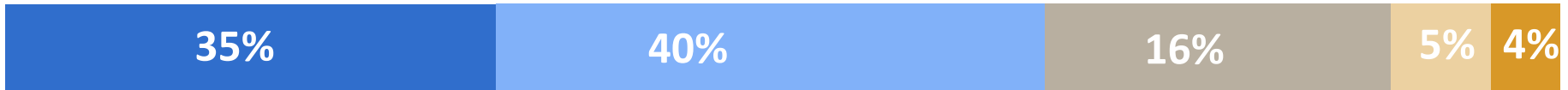
49

100% of paper survey responses entered out of 49 received



Activity: Data in Context

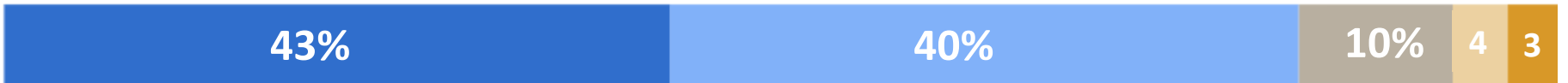
My parish makes me feel welcomed and accepted:



Parish Data



Diocesan Data



National Data

Activity: Data in Context

The Eucharist really is the body and blood of Jesus Christ:



Parish Data



Diocesan Data



National Data

Helpful Tips

DOs

1. Explore the reports
2. Celebrate success
3. Get curious OR generate hypotheses about the data
4. Use additional resources provided
5. Consider focus groups or individual conversations

Helpful Tips

Avoid

1. Over analyzing
2. Dismissing the data
3. Taking negative feedback personally
4. Procrastinating
5. Sharing the entire report with everyone

Communication

- Develop a communication plan to share results with your parishioners.
 - **DO NOT SIMPLY FORWARD THIS OUT TO YOUR PARISHIONERS.**
 - Be sure to provide context when sharing data.
 - Consider sharing summaries or highlights to start.
 - Use multiple mediums.
- Keep parishioners informed throughout the process, not just a “one and done” report.
- Continue to collect feedback.
- CLI has templates and resources to assist with communication.

Homework

1. Start by digging into the Key Drivers Report and see how you're doing in those key areas.
2. Have discussions about what you see and start to identify the most immediate needs of the parish.
 - Use the DMI Resources to track notes
3. Pray for guidance and clarity!



Catholic Leadership
INSTITUTE

Thank you!

DMI Webinar #2 coming next week



IGNITING
OUR PARISHES



EMBOLDENING
OUR CLERGY



FORGING
OUR FUTURE